

**Airport General Direction No: 1**  
**Parking, Speed and Traffic Restrictions.**

References:

- A. Aerodrome (Administration) (Jersey) Law 1952.
- B. Aerodrome (Jersey) Regulations 1965, Part 2, Regulation 3 (1).
- C. Aerodrome (Jersey) Regulations 1965, Part 3, Regulation 5.
- D. Motor Traffic (Taxi-cabs-General) Order 2002.

1. The following parking, speed and traffic restrictions apply within aerodrome areas administered by Ports of Jersey.

**Parking**

2. Parking is restricted as set out below.

a. General. General Provisions are set out in the following table.

Provision No.	Offence Description The following are prohibited:	Offence Number	Time of Restriction
GP - 01	Parking on a footway	(3)	Any Time
GP - 02	Parking a vehicle within a specially designated area	(5, 8, 9, 11 or 12)	Any Time
GP - 03	Parking in a position causing an obstruction	(3, 4, 6 or 7)	Any Time
GP - 04	Parking in a position likely to cause danger	(3)	Any Time
GP - 05	Parking on a hatched area	(3)	Any Time
GP - 06	Parked on a yellow line	(7)	Any Time
GP - 07	Failing to display a valid Insurance Disc	(14)	Anytime

b. Detailed parking restrictions relating to specific Aerodrome areas can be found at Annex A.



**Speed limits**

3. Speed limits are set as below:

- a. **20 miles per hour** on all roads within the Aerodrome area.
- b. **5 miles per hour** within all car parks within the Aerodrome area.

**One way traffic**

4. Traffic is restricted to one-way flow in the following areas:

- a. Airport Road - One-way clockwise from opposite the 10 minute waiting area 2)a (Pit Stop), westwards passed the Departures Hall, around the central taxi waiting area 4)f and eastwards back towards the exit junction.

A handwritten signature in black ink, enclosed within a hand-drawn oval shape.

**Stephen Driscoll**

Airport Director for Airport Authority

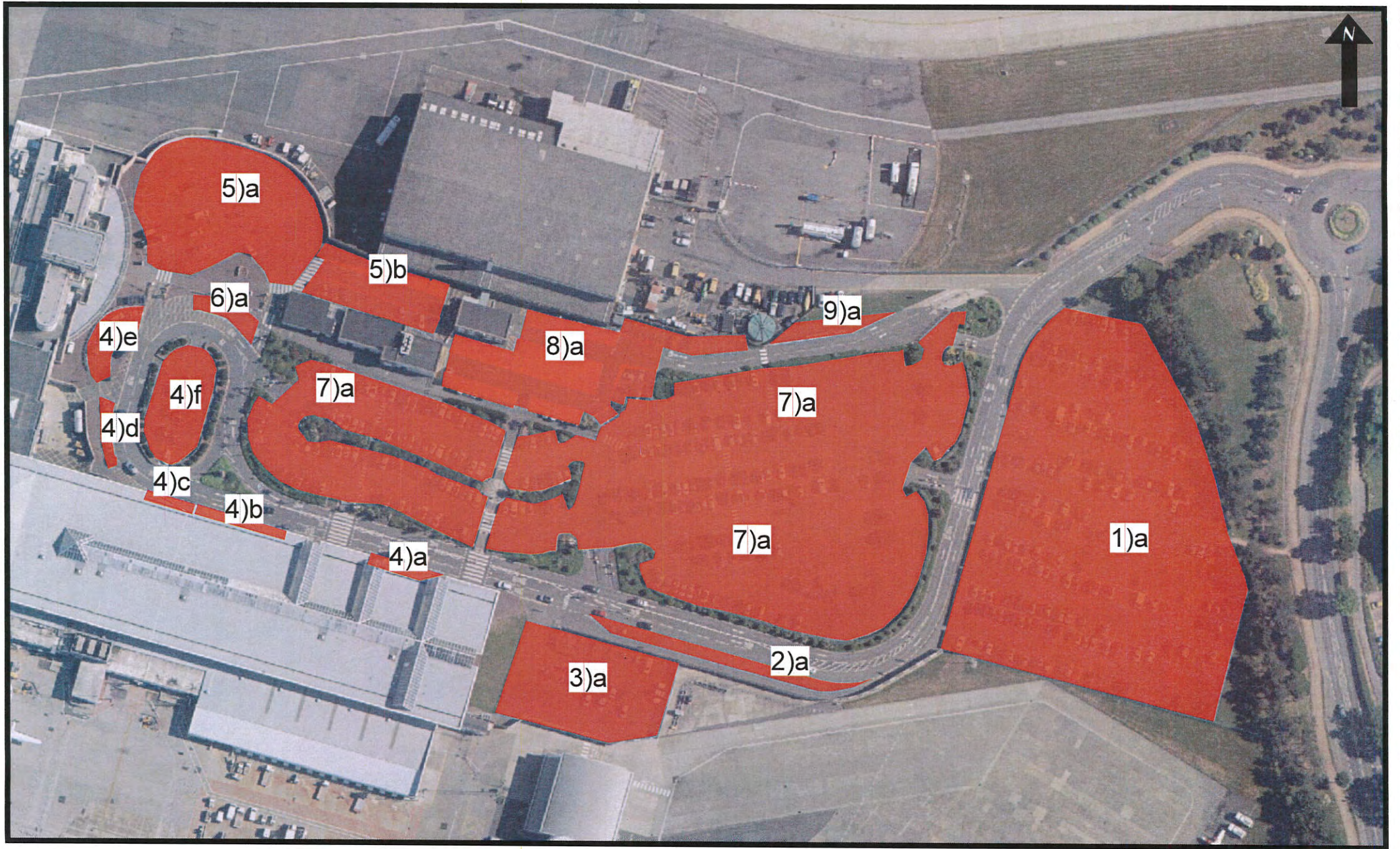
04 December 2015

**Parking Restrictions in Specific Aerodrome Areas**

<b>Area</b>	<b>Location</b>	<b>Restriction</b>	<b>Time of Restriction</b>
<b>1)a Airport Staff Car Park</b>	East of the Airport Road, between the roundabout and the 10 minute waiting area 2)a.	Authorised staff and 3 <sup>rd</sup> parties only. Valid permits to be displayed at all times.	Anytime
<b>2)a Pit Stop – 10 Minute Waiting Zone</b>	Left-hand side of Airport Road, alongside wooden security fencing before the Departures Hall.	Public waiting only. Vehicles are not to be left un-attended.	10 minute maximum. Any time
<b>3)a Departures East Car Park</b>	East of the Departures Hall, behind the wooden security fence.	Premium Parking, Duty Airport Vehicles, SOJP Vehicles & Authorised Contractors only.  Valid permit parking only, permits to be displayed at all times	Anytime
<b>4)a East Drop-off zone</b>	First drop-off zone between the first and second entrances to the Departures Hall	Public drop-off zone, vehicles must not remain in location once passengers have been unloaded.  Vehicles are not to be left un-attended.	Anytime
<b>4)b West Drop-off zone</b>	Second drop-off zone between the second and third entrances to the Departures Hall	Public drop-off zone, vehicles must not remain in this location once passengers have been unloaded.  Vehicles are not to be left un-attended.	Anytime

<b>4)c Taxi Queuing Lane</b>	From the third entrance to the Departures Hall up-to the 1 <sup>st</sup> yellow hatched area.	No public parking. Taxis only while waiting in line to pick-up fares.	Anytime
<b>4)d Taxi Queuing lane</b>	From the end of the 1st hatched area up to the 2 <sup>nd</sup> yellow hatched area.	A controlled taxi-cab may –  (a) Stand on a taxi rank; and (b) Pick up passengers at a taxi rank.	Anytime
<b>4)e Taxi Pick-up Area</b>	From the end of the second yellow hatched area, along the front of the Arrivals Hall up to the entrance to the “Short Stay” car park.	Use of taxi ranks – restricted taxi-cabs  1) Except as provided by paragraph 2), a restricted taxi-cab must not –  (a) stand on a taxi rank; or (b) pick up passengers at a taxi rank  2) A restricted taxi-cab may pick up passengers at a taxi rank established at the Airport, Albert Pier or Elizabeth Harbour if no controlled taxi-cab is standing on the taxi rank.	Anytime
<b>4)f Taxi Overflow Parking Area</b>	Central parking area opposite Arrivals Hall		Anytime
<b>5)a Short Stay Car Park</b>	Adjacent to the Arrivals Hall	Public Parking Area for short stay parking and arrivals pick-up.  Coach and Minibus only spaces around the left-hand perimeter of the car park  Disabled parking only spaces	Anytime  -----  1 <sup>st</sup> April until 31 <sup>st</sup> October – Parking is restricted on Saturdays to coaches and minibuses only
<b>5)b Short Stay Car Park</b>	Continuation of car park between Old Hangar and Service Buildings.	Left-hand side of area for “Booked Taxis” only.  Last two spaces on left-hand reserved for Valid Permit Holders only.	Anytime





19 November 2015  
Scale: 1:1700  
mapping@gov.je



© STATES OF JERSEY PLANNING & ENVIRONMENT DEPARTMENT

States of Jersey